



STARS and Project Pipeline Study Locations

Albemarle County Presentation to
the MPO Technical Committee


Jessica Dimmick, Principal Transportation Planner




Agenda

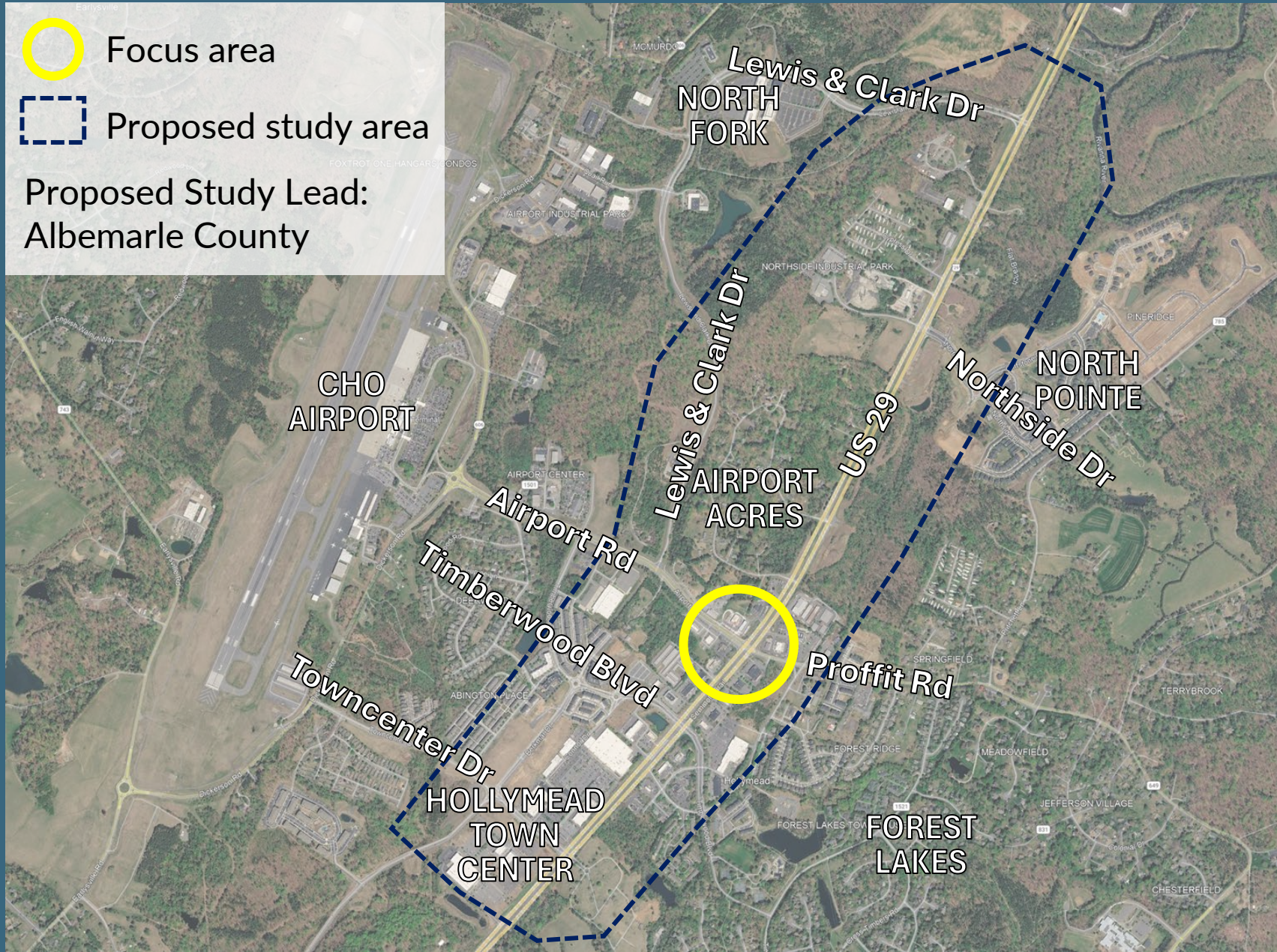
- Desired Study Locations
 - US 29 at Airport Road
 - US 250 at Free Bridge
 - I-64 Exit 118 at US 29
- Other priority locations

US 29 at Airport Road

 Focus area

 Proposed study area

Proposed Study Lead:
Albemarle County



Issues to address in the study:

- Safety, especially at PSI locations
- Congestion, especially at US 29 & Airport Rd/Proffit Rd intersection
- Pedestrian and bicycle facilities

Priority Factors:

- Regional Center in AC44 Comp Plan
- Lack of pedestrian and bicycle facilities
- Desired future transit
- Forthcoming developments
- VTrans Priority Needs
- Airport Expansion

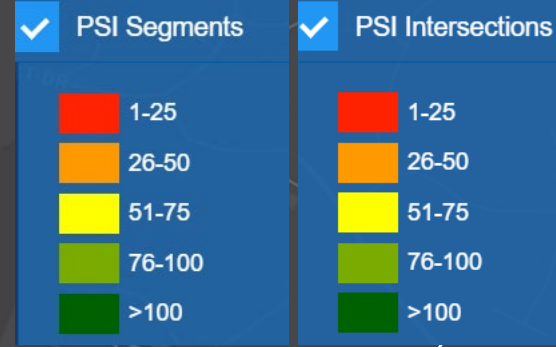
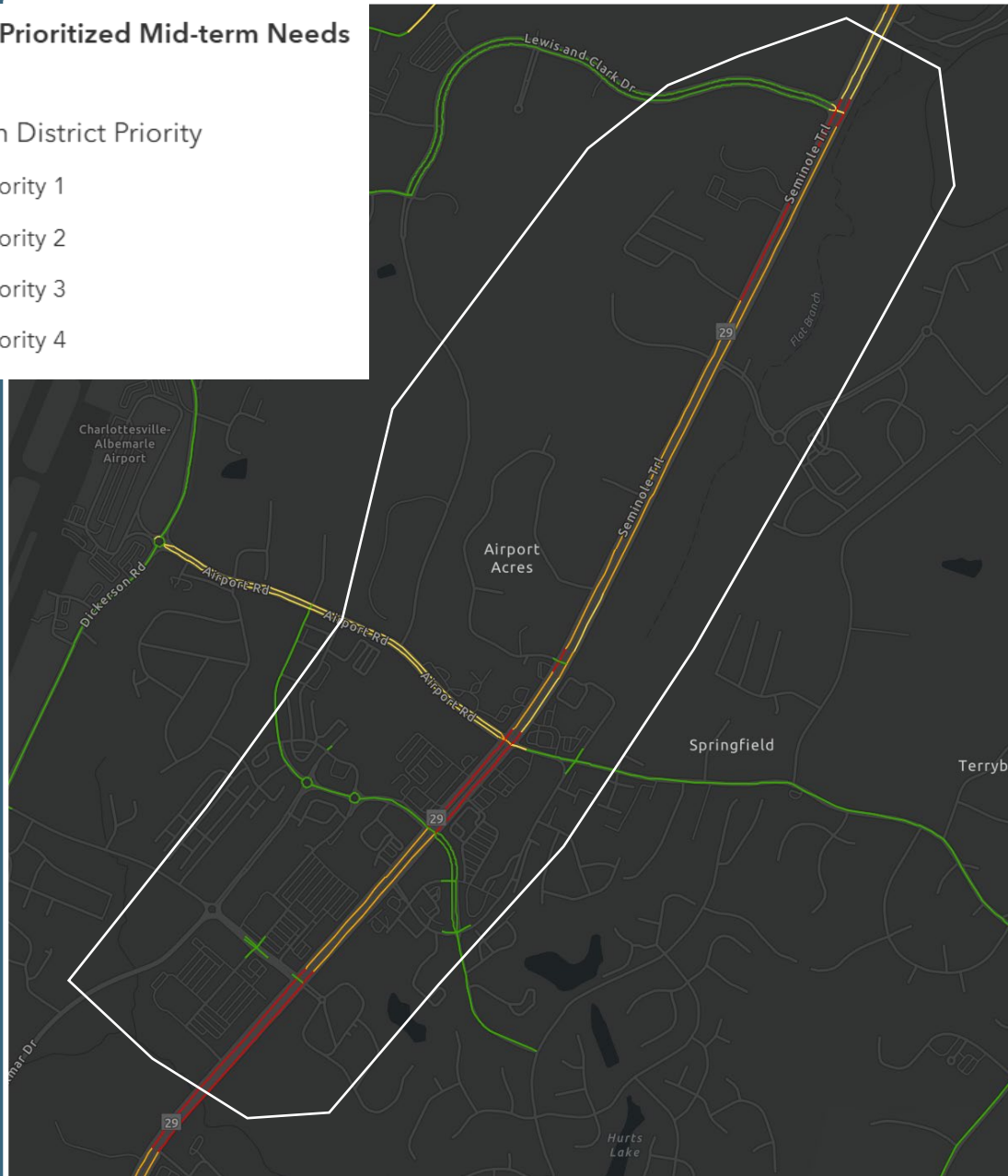
US 29 at Airport Road

2025 VTrans Prioritized Mid-term Needs (Draft)

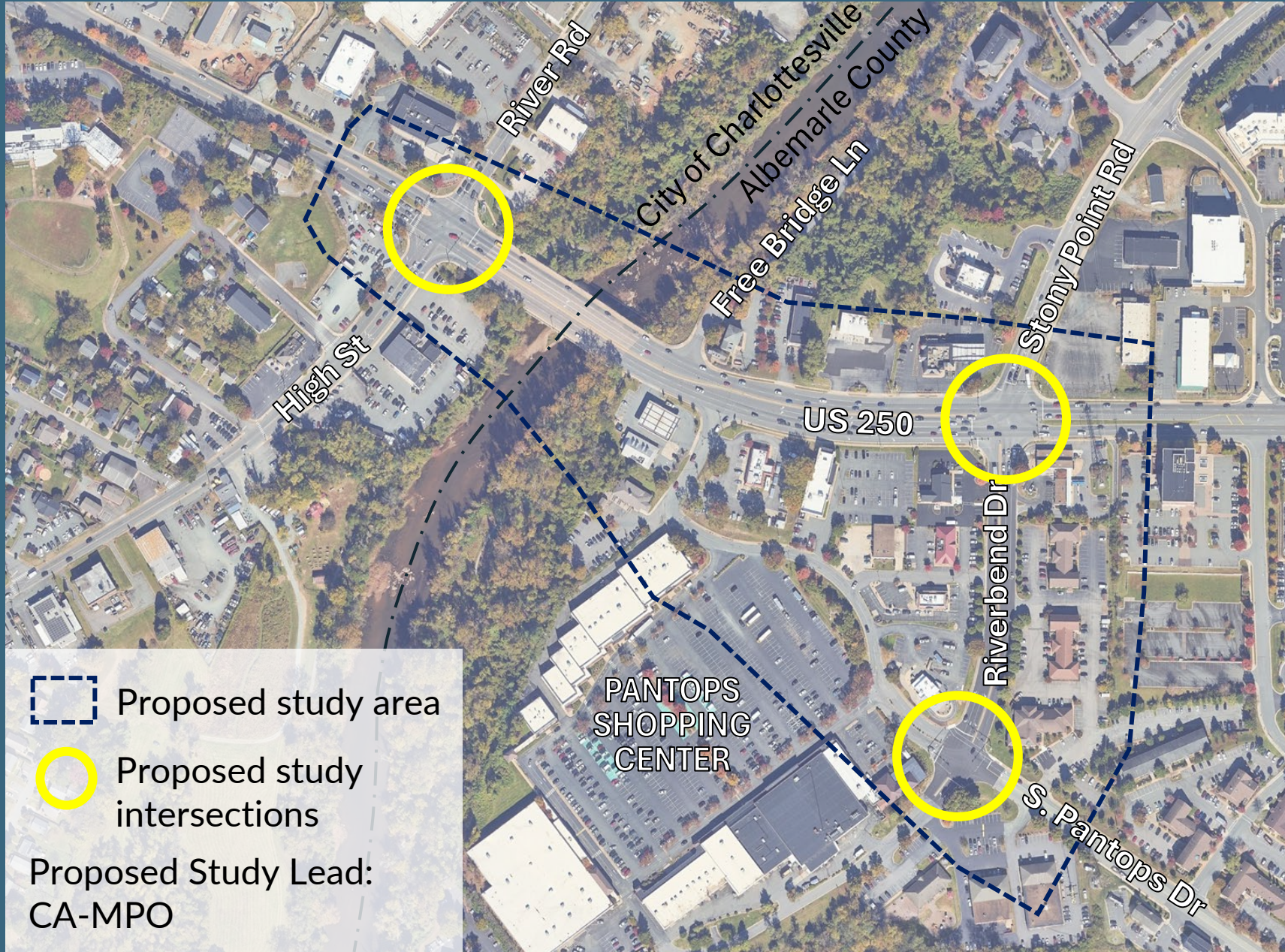
Construction District Priority

- Priority 1
- Priority 2
- Priority 3
- Priority 4

Proposed Study Area



US 250 at Free Bridge





Issues to address in the study:

- Congestion limiting ability to achieve desired activity centers in Pantops, especially at High St/ River Rd intersection
- Pedestrian and bicycle connections across the river

Priority Factors:

- Multiple activity centers designated in AC44 Comp Plan in Pantops area
- Opportunity for regional coordination

 Proposed study area

 Proposed study intersections

Proposed Study Lead:
CA-MPO

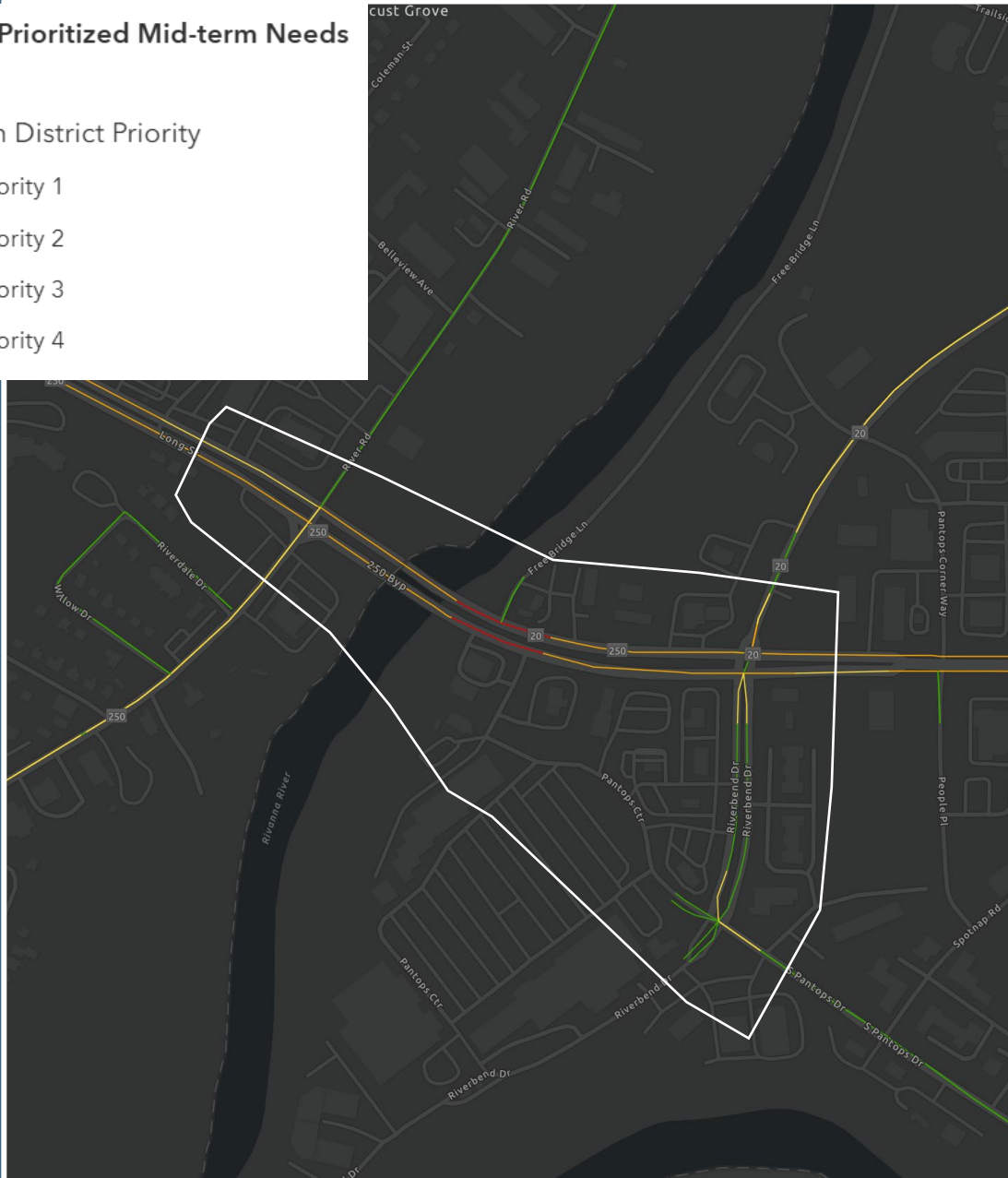
US 250 at Free Bridge

2025 VTrans Prioritized Mid-term Needs (Draft)

Construction District Priority

- Priority 1
- Priority 2
- Priority 3
- Priority 4

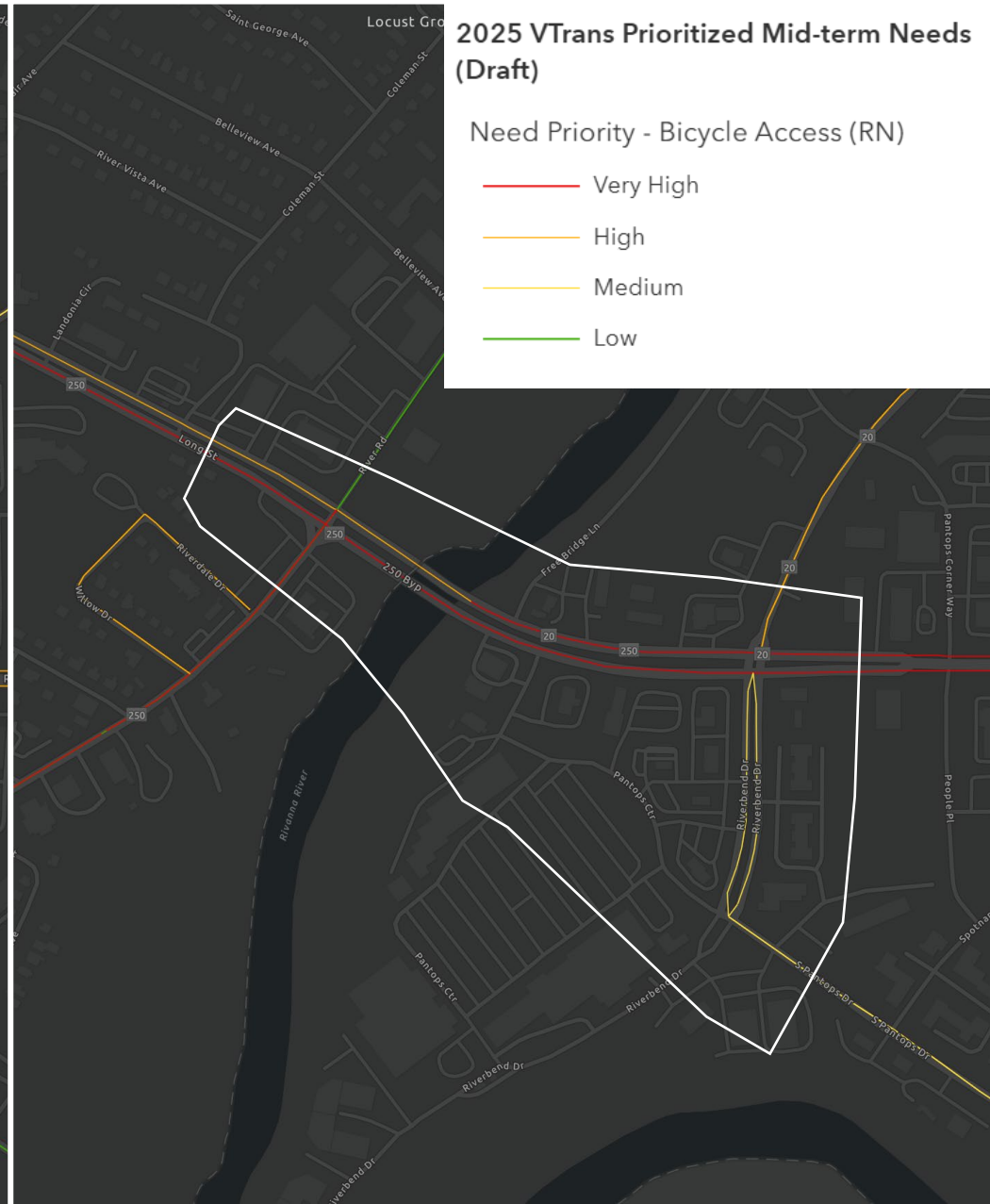
Proposed Study Area



2025 VTrans Prioritized Mid-term Needs (Draft)

Need Priority - Bicycle Access (RN)

- Very High
- High
- Medium
- Low



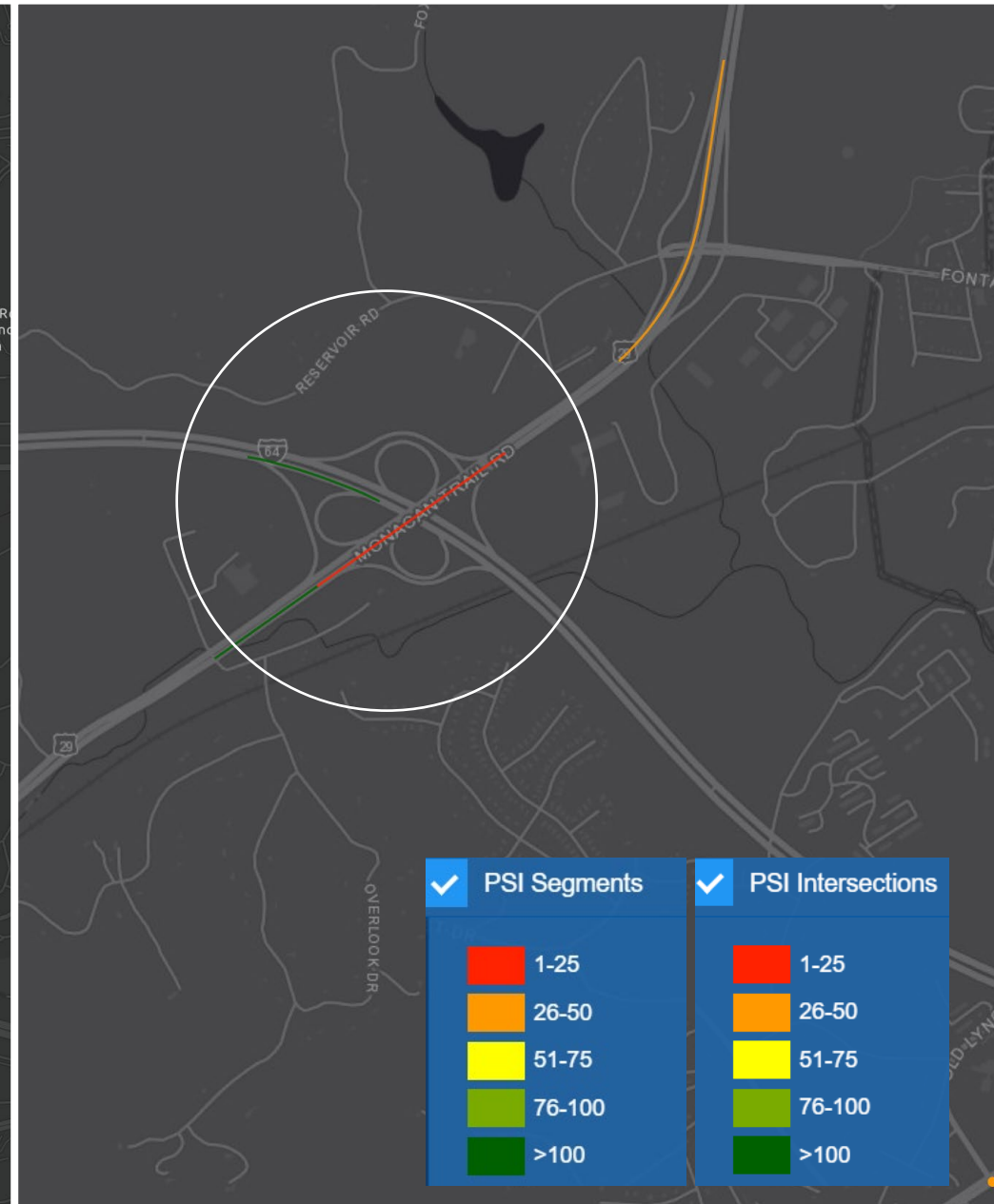
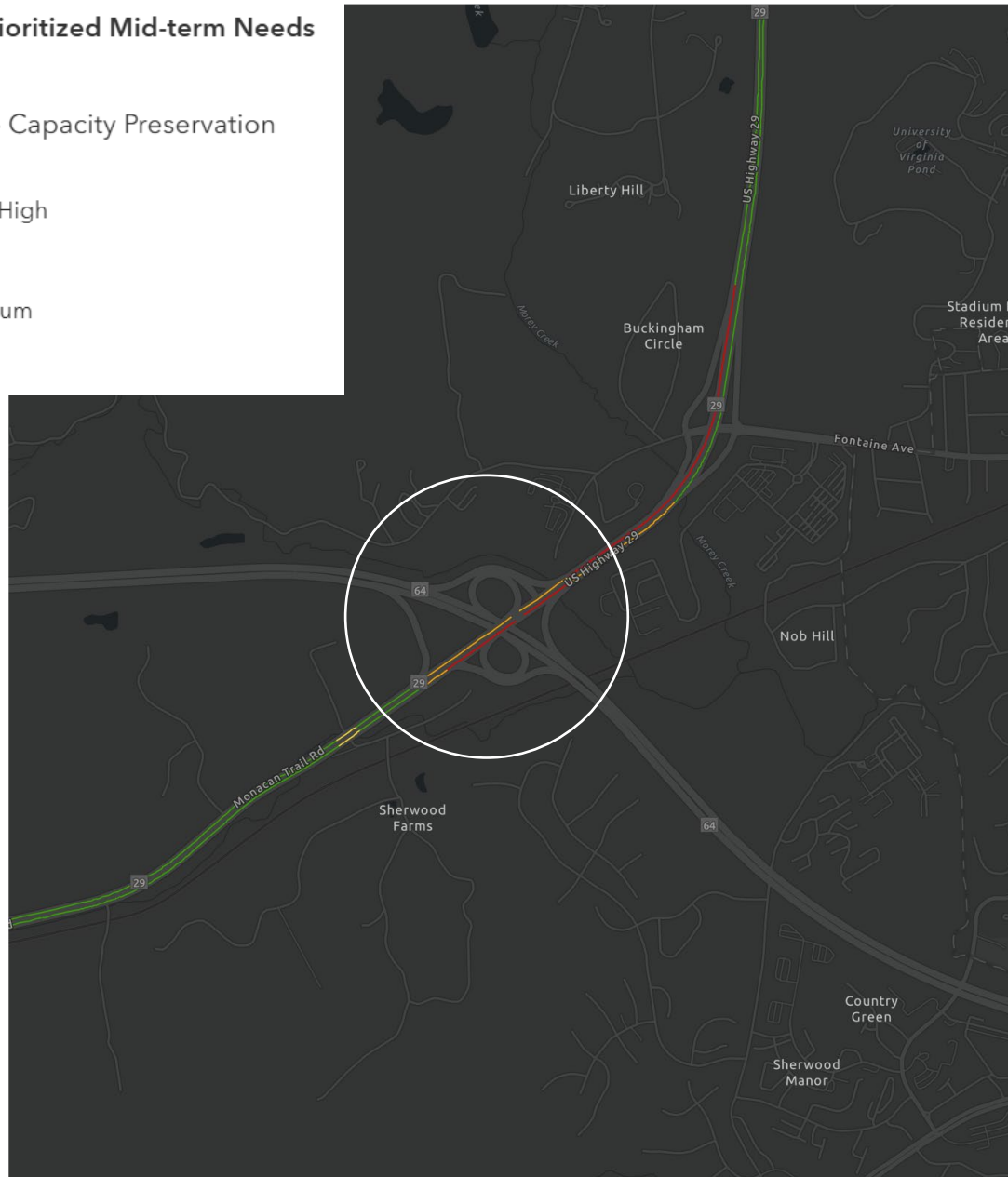
I-64 Exit 118 at US 29

2025 VTrans Prioritized Mid-term Needs (Draft)

Need Priority - Capacity Preservation (CoSS)

- Very High
- High
- Medium
- Low

○ Focus Area



✓ PSI Segments	✓ PSI Intersections
■ 1-25	■ 1-25
■ 26-50	■ 26-50
■ 51-75	■ 51-75
■ 76-100	■ 76-100
■ >100	■ >100



Other Priority Locations

The following locations were considered, but are not ideal candidates for the next round of STARS and Pipeline Study processes. These locations may be advanced through other future study processes.

- US 29 from South Fork of Rivanna River to Greene County
- Highway 53
- Rio Road from John Warner Parkway to City line
- South Pantops Drive
- Hillsdale Drive at Rio Road
- Greenbrier Drive